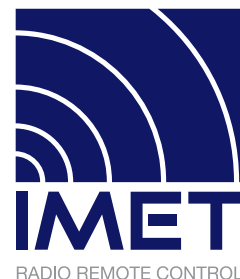


WAVE MARINE

Y A C H T R E M O T E C O N T R O L

BY IMET s.r.l.



THE RADIO REMOTE CONTROL ADVANTAGES

The installation of a radio remote control system does not imply any modification of the existing control station. You will have the possibility to choose the most suitable position on the boat to manoeuvre it, thus facilitating the most delicate operations, like the mooring at a buoy or at a wharf, the anchorage and the fuel-filling phases.

Thanks to this extremely easy to use hand-held transmitter, intuitive command buttons that are well protected against unintended manoeuvres, you will be able to drive the ship by yourself and evaluate at best the available manoeuvring room.



DETAILS



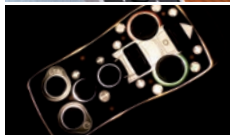
STOP BUTTON

The stop button allows you to activate the corresponding circuit on the receiver, which brings back all the commands to a safety status, in case of anomalies.



NO ENVIRONMENT IS TOO HARSH

Made of compounds that are compliant with the RoHS standard and able to ensure maximum performance in terms of robustness, mechanical and thermal stability (with operating temperatures from -25°C - +70°C).



BACKLIT PANEL

Illuminated keyboard for nighttime operations.

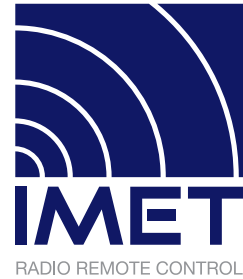
IMET: SAFETY FOR 30 YEARS

IMET has been designing and manufacturing radio remote controls for 30 years for unnumbered application fields, that require extremely high safety standards, like the ones of industry and mining. Safety has always been at first place for IMET, thus ensuring absolute reliability to its customers. Both, the transmitter and receiver, have doubled microprocessor circuits and work accordingly with the redundancy and self cross-diagnostic criteria: a permanent coded radio link is present between the transmitter and the receiver carrying the command information at a frequency of 20 times per second, granting a prompt, interference-free response to the received commands (lower than 100 ms). All the IMET products are fully designed, assembled and severely tested at its premises. This approach has made IMET one of the world leaders among the safety radio remote control manufacturers.

WAVE MARINE

Y A C H T R E M O T E C O N T R O L

BY IMET s.r.l.



SOME EXAMPLES OF USE:

SAILING IN NARROW PASSAGES

Harbour and channel navigation is one of the most delicate phases for skippers. The WAVE MARINE radio remote control will allow you to manoeuvre the boat by yourself from the most suitable position and the best point of view. A traditional stationary control console does not give you some of the benefits of the hand-held radio remote.

BITTING THE ROPES

While keeping the complete control of your boat at your fingers, you can approach the wharf and secure or recover the ropes with extreme simplicity, by adjusting its trajectory from your transmitter with small engine corrections. This high control capability will also help reduce the possibility of collisions.

TECHNICAL DATA

Dimensions (L.W.A.)	157 x 80 x 44 mm
Casing material	Charged Nylon UL94 HB
Degree of protection	IP 65
Weight (battery included)	≈ 404 g max
Operating and storage temperature	-25°C - +70°C / -40°C - +85°C
Command STOP	PLe Cat.4 (ISO 13849-1:2006 6.2.7 architecture)
Operating frequency	I.S.M. 2,4 GHz, 16 ch
Number of programmable channels	16
Transmission Mode	Half Duplex
Range	100 m
Autonomy at 20°C	≈ 18 hours
Hamming distance	≥ 8
Probability of missed error detection	< 1.832x10 ⁻¹¹ (T.B.V.)
Backlit panel	Optional
Diagnostic	Through led and buzzer on TX or with interface on PC

MOORING

This WAVE MARINE radio remote control allows you to moor by yourself in absolute safety conditions, from any place of the boat. You can control the right and left engines and the bow and stern propellers. Simply choose the most suitable point of view and approach comfortably the harbour's wharf.

ANCHORING

Thanks to this hand-held radio remote, you can stand at the bow and raise or drop the anchor, while keeping an eye at a safe anchorage and at the presence of other boats.

COMPLIANCE TO THE REGULATIONS

- IEC/EN 60950-1+A2
- EN 60204-32
- EN 60529:1991+A1
- ISO 13849-1
- IEC 60945:2002
- EN 13557/A2
- EN 61000-6-2
- 2006/42/EC (Directive Machines)
- 2014/53/EU (RED Directive)
- 2014/90/EU (Marine equipment Directive)
- EN 62311 (Human exposure restrictions for electromagnetic fields) (0 Hz - 300 GHz)
- EN 301 489-1
- EN 62311
- EN 301 489-1
- EN 301 489-17
- EN 300 328
- EN 62209-2
- FCC KDB 447498 D1
- RSS 102
- RSS 210
- FCC CFR 47 Part 15, Subpart B, Subpart C

SUPPLY KIT

Transmitting unit, receiver unit, 2 rechargeable Li-On batteries, battery charger, carrying belt, packet fuses, RX fixing brackets, user manual, declaration of conformity CE.

IMET Srl reserves itself the right to make eventual changes to the product without prior notice.

IMET s.r.l. - 33077 Sacile (PN) Via Fornace 8 - t. +39 0434 7878 - f. +39 0434 737848 - info@imet.eu - www.wavemarine.it



REG. N. 457-A
UNI EN ISO 9001:2015

